

Cathedral Gorge Family Campout April 27-29, 2007

Schedule

Date	Time	Activity
4/27	Afternoon	Leave on your own. Be safe and travel in pairs or more. Call Dan (496-4062) when departing. Group Camp Site #1.
4/28	10:00 AM 4:00 PM 6:30 PM 10:00 PM	Depart for activities (cave exploring, geocache, etc.) Return from activities – Prepare Dinner Moonlight Hike with a ranger Lights Out
4/29	10:00 AM	Guns and Roses. Leave on your own. Be safe and travel in pairs or more.

Activities

Activities
Cave Exploring
Hiking
Swimming?

Equipment Needed
Day Packs, **Lots** of Water, Sack Lunch, Snacks, First Aid Kit, and Survival Kit w/ 10 Essentials, swim suits

Temps will be in the 40's to 80's!

Campground Info:

- Real showers (bring quarters) and flush toilets.
- Fires are permitted only in the fire rings and grills provided. We need to provide our own firewood.
- Quiet times are from 10 pm to 7 am.

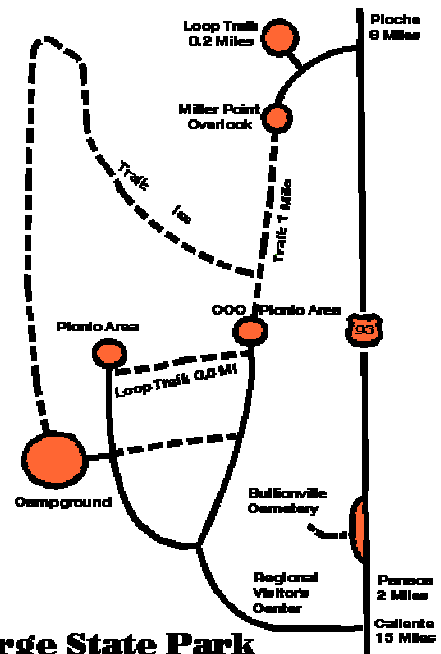
Check out these links for more information!

<http://parks.nv.gov/cg.htm>

<http://www.desertusa.com/nvcat/nvcat.html>

http://www.americansouthwest.net/nevada/cathedral_gorge/state_park.html

<http://parks.nv.gov/Amenities%20table.pdf>



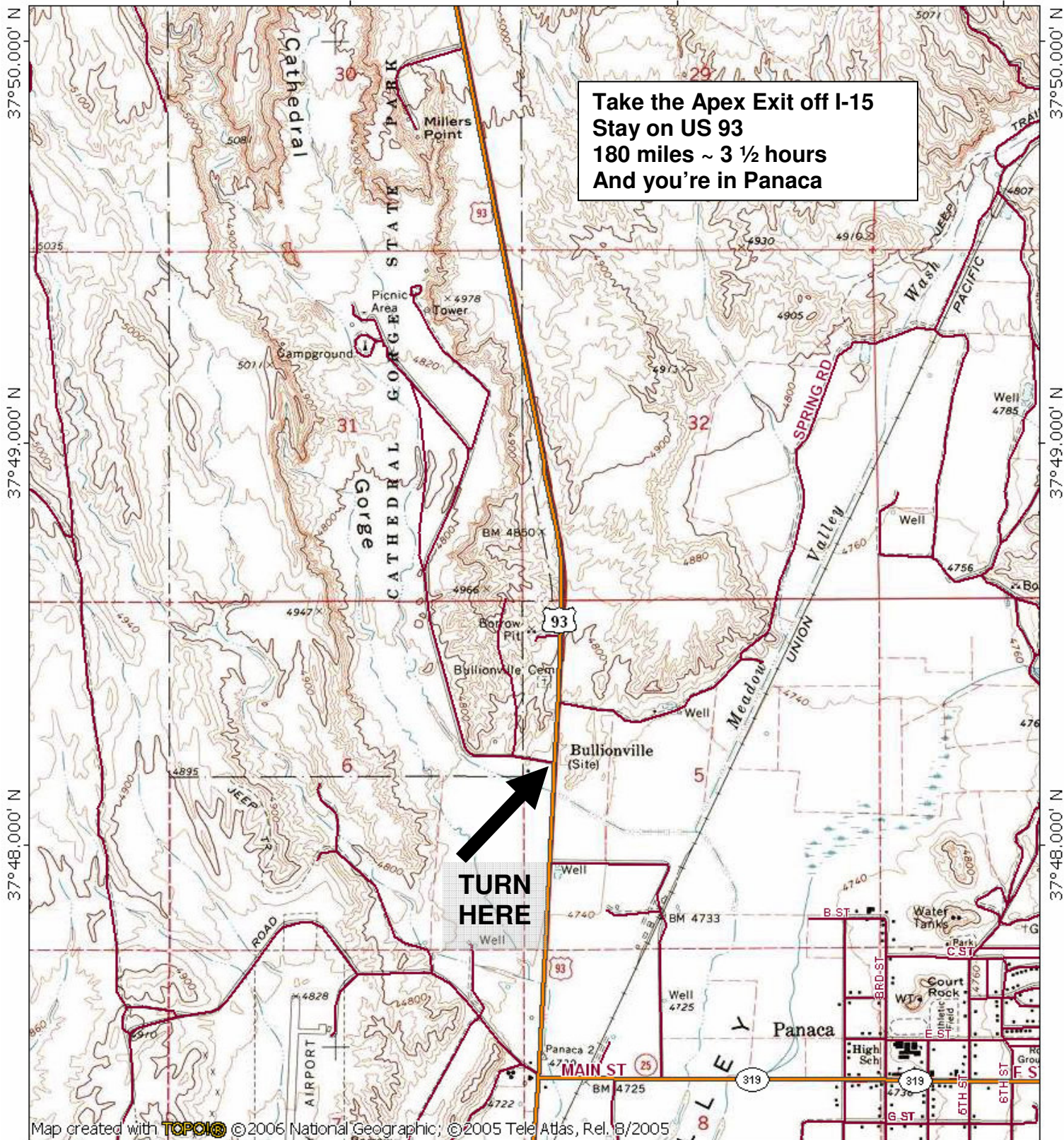
Cathedral Gorge State Park

114°25.000' W

114°24.000' W

WGS84 114°23.000' W

Take the Apex Exit off I-15
Stay on US 93
180 miles ~ 3 1/2 hours
And you're in Panaca



37°50.000' N

37°49.000' N

37°48.000' N

37°50.000' N

37°49.000' N

37°48.000' N

Map created with **TOPOLIO** © 2006 National Geographic; © 2005 Tele Atlas, Rel. 8/2005

114°25.000' W

114°24.000' W

WGS84 114°23.000' W

